

Explosion proof camera Catalogue



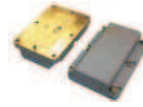
CorDEX Instruments provide state of the art imaging systems for harsh and explosive environments. To help you make the most out of your instrument CorDEX provides an ever expanding list of accessories designed to make your work safer, faster and better.

Maximise the productivity of your CorDEX instrument

For each CorDEX instrument, you can find everything from standard replacement parts through to optional extras, cases and leads all designed to increase your efficiency, comfort and safety.

Call us today to speak with a technical expert who can help you select the correct accessory for your CorDEX instrument.

CALL US NOW!
+31 (0) 78 652 1151



Batteries and chargers

4



Leads, fixings and fuses

6



Hard cases and holsters

7



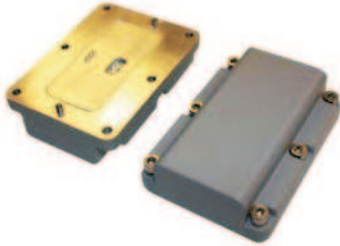
Featured product centurion XpG

Ref. ID251, Rev.B

Email: info@metesco.nl
Telephone: +31 (0) 78 652 1151
www.metesco.nl

Batteries and chargers

1 centurion Xp series Battery (CDX2341-121)
€ 231,00



2 centurion Xp series Battery cHarGinG station (XP-323)
€ 382,00

3 centurion Xp series poWer suppl y – uK pLuG (CDX2341-130)
€ 165,00



4 centurion Xp series poWer suppl y – eu pLuG (CDX2341-129)
€ 165,00

5 centurion Xp series poWer suppl y – us pLuG (CDX2341-157)
€ 165,00



CENTURION XP SERIES REPLACEMENT BATTERY

1 (CDX2341-121)
Standard 1000mAH NiMH battery pack for Centurion XP series digital camera. Incorporates reverse charging and over current protect via replaceable fuse. Technical data: 3W (Max).

Safety Note! Only use CorDEX fuse part number CDX2341-121. Failure to do so will render the camera certification invalid.

Weight: □226g **Dimensions:** □25x82x60

2 CENTURION XP SERIES BATTERY CHARGING STATION (XP-323)

1-bay battery charger for the Centurion XP series NiMH battery pack. The charger can be desk or wall mounted and is supplied complete with all required fixings.

N.B.! Power supply is included, please specify plug type when ordering

Weight: □125g **Overall dimensions:** □46x93x108

3 CENTURION XP SERIES POWER SUPPLIES (CDX2341-130/129/157)

The Centurion XP series power supply is used in conjunction with the Battery Charging Station. Multi-stage charging is shown by the built in LED which indicates the status of the charge cycle.

N.B.! Specify plug type on order.

Weight: □520g **Overall dimensions:** □102x63x83

info@metesco.nl
+31 (0) 78 652 1151
www.metsco.nl

Leads, fixings and fuses

1 centurion Xp series
usb coMMunication
Wand
(XP-322)
€ 106,00



2 centurion Xp
series Battery
FiXinG Kit
(XP-325)
€ 46,00

CENTURION XP SERIES USB COMMUNICATIONS WAND

1 (XP-322)
This high speed cable is used to download images and movies from the Centurion XP series to a PC.
Safety Note! Only download images in the non-hazardous area.
Weight: □0.23kg **Length:** □110cm

2 **CENTURION XP SERIES BATTERY FIXING KIT**
(XP-325)

These stainless steel, high strength fixings can be used to replace those supplied to secured the battery to the camera body.

Safety Note! Only used CorDEX supplies fixings to secure the battery, failure to do so will void the certification.

3 centurion Xp series
repLaceMent Fuse
Kit
(XP-326)
€ 61,00

No image available

3 **CENTURION XP SERIES REPLACEMENT FUSE KIT**
(XP-326)

This pack of 10, 1,5A fuses can replace the overcurrent protection device built into the Centurion XP series battery pack. Supplied complete with a fuse replacement tool.

Safety Note! Only remove the battery in a non-hazardous area. Only CorDEX Instruments replacement fuses should be used, failure to do so will void the certification.



4 centurion Xp
series HoLster
(XP-327)
€ 168,00

4 **CENTURION XP SERIES HOLSTER**
(XP-327)

Durable leather holster designed to protect your Centurion XP series camera, while keeping it close at hand.

5 centurion Xp
series Hard
transport case
(XP-328)
€ 412,00



5 (XP-328)
This rugged, plastic hard case is watertight and includes custom designed foam supports to hold all items securely. The case can be locked with padlocks and includes a breather valve to prevent pressure build-ups in aircraft holds.
Safety Note! The transport case is not to be used in the hazardous location.
Weight: □1.6kg **Overall dimensions:** □270L x 246W x 127H

Ref. ID251, Rev.B

Email: info@metesco.nl
Telephone: +31 (0) 78 652 1151
www.metsco.nl

distributed by



Metesco Nederland

Einsteinstraat 67
3316 GG Dordrecht
t +31(0)78 652 1151
f +31(0)78 652 1161
e info@metesco.nl
www.metesco.nl

Email: info@metesco.nl

Telephone: +31 (0) 78 652 1151

www.metesco.nl