



## Centor Star Touch

Force gauge, torque gauge and digital display



# Presentation of the range Centor Star Touch

## The most powerful of force gauges

The functions of expensive and complex testing machines, formerly reserved for research or development laboratories, are now available for production thanks to the **force gauge Centor Star Touch**.

Accuracy of 0.1% FS, acquisition speed of 5,000 Hz, internal memory, measurement of the maximum, graphic display are only the basic characteristics. The Centor Star Touch is also designed to directly display the most requested types of force measurement results: break, averages, force vs time curve plot, statistical calculations, Pass/Fail sorting in real time according to the manufacturing tolerance interval, data sending and communications to a computer via RS232 or USB.

Designed for the industrial environment, it provides high performance but also simplicity of use thanks to its large color touch screen. The icons guide the user in the configuration best suited to his tests. Settings, messages and results are available in several languages. For better integration into manufacturing processes and communication with other devices, the Centor Touch is equipped with fast digital outputs.

**The Centor Touch's overall functionality, flexibility and ergonomics make it the ideal manufacturing solution for simple or advanced testing.**

### The Centor Star Touch range comes in four versions:

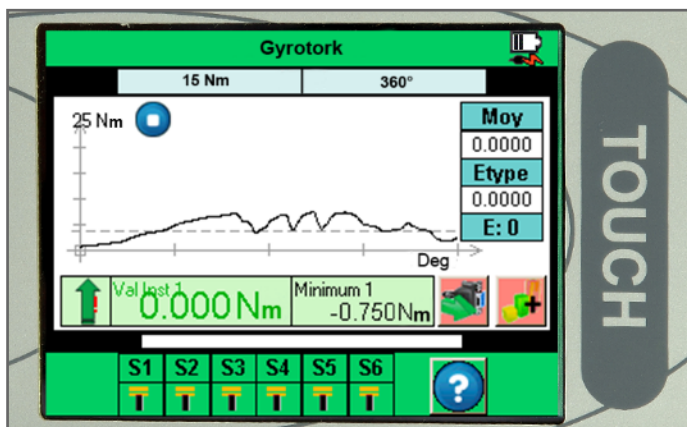


Force gauge with internal load cell

Display with external load cell

Display with interchangeable SPIP sensor

Display with Bluetooth sensor



### Curve and results on the display

The Centor Star Touch measurement screen permits real-time plotting of the force or torque versus time curve. Two calculations can also be displayed such as maximum force or breaking force. The internal memory of 2,000 values is used to store measurement results.

The Centor Touch has simple and user-friendly menus thanks to its colour screen. The parameter setting and configuration of the tests are done by means of the touch screen: virtual keyboard, drop-down menu, icons...

# Force gauge Centor Star Touch - Internal load cell



## Advanced force measurement from 0 to 1000 N (0-225 lbs)

### Two measurement modes

The Centor Star Touch can operate in two measurement modes: continuous or test. In continuous mode, the force gauge measures force continuously but cannot trace the curve or perform special calculations.

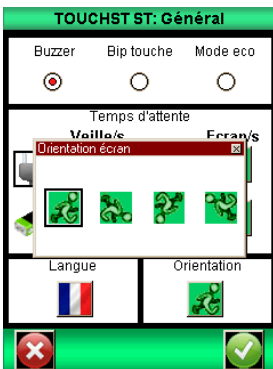
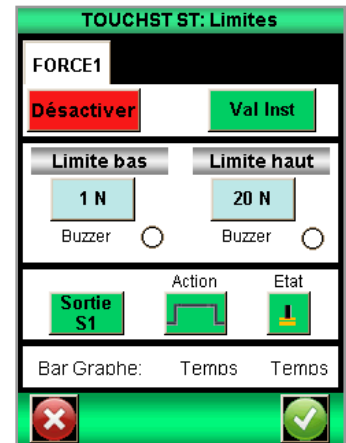
In test mode, the Centor Star Touch makes the most of its capabilities: setting a test time, acquisition on demand (from a PC or PLC), curve plotting, configurable calculations, activation of outputs at the end of the test, etc.

### Limit functions

The Centor Star Touch has a function that allows you to set force measurement limits. This system offers the possibility to set a low threshold and a high threshold for the limit.

The configured thresholds appear automatically on the bar graph and the graph during the tests during measurements. Similarly, the display color of the measured value changes from green, orange or red when the limits are exceeded.

In addition, the force gauge can perform an action when it reaches a limit: emission of a beep, change of color on the screen that allows the operator to be easily informed that a limit is reached, activation of digital outputs on the limits. This allows for example to stop a motorized test stand when a force threshold is reached to protect the sensor.



### Swivel screen

The display of the Centor Touch Star can be adjusted by internal software. It can be rotated 90°, 180° or 270°.

This operation is done directly from the Centor Touch menu. No mechanical disassembly or modification is necessary to change the position of the screen.

This function can be useful if the tests are done horizontally or if you want to integrate the force gauge in a control panel.

Internal load cell	Capacity	Accuracy 0,1% FS	Resolution 1/10,000 FS	Thread
	N / LBS	N / LBS	N / LBS	
CNR CT 5	5 / 1	+/- 0,005 / 0.001	0,0005 / 0.0001	M5
CNR CT 10	10 / 2	+/- 0,01 / 0.002	0,001 / 0.0002	M5
CNR CT 25	25 / 5	+/- 0,025 / 0.005	0,002 / 0.0005	M5
CNR CT 50	50 / 10	+/- 0,05 / 0.01	0,005 / 0.001	M5
CNR CT 100	100 / 20	+/- 0,01 / 0.02	0,010 / 0.002	M5
CNR CT 250	250 / 50	+/- 0,025 / 0.05	0,025 / 0.005	M5
CNR CT 500	500 / 100	+/- 0,05 / 0.1	0,050 / 0.01	M5
CNR CT 1000	1000 / 200	+/- 1 / 0.2	0,100 / 0.02	M5

# Centor Star Touch R - Display with external load cell

## Force and torque sensors dedicated to your applications



### Easy integration into mechanical systems

The Centor Touch Star R is equipped with a high-precision, low-deformation S-sensor as standard and is suitable for all types of mechanical mounting. Its two female threads allow the force sensor to be easily mounted on a frame or integrated into an automatic measuring system in a production line. Moreover, thanks to its digital inputs and outputs, it can easily communicate with a PLC.

In the case of special mechanical assemblies or if space is very limited, it is possible to use other types of force sensors (male thread, miniature sensor, pedal etc) to replace the S-sensor. And if you want to have several sensors with this dynamometer (force or torque), you can connect any sensor equipped with SPIP technology, it is automatically recognized by the display.

### Multiple sensors with a single display

If you wish to have several sensors with your Centor Touch (force or torque), you can connect any sensor equipped with the SPIP technology from Andilog to the connector. This type of sensor is automatically recognized by all Centor Star Touch and Dual force and torque gauges. **The sensor characteristics are stored in its internal memory.** When the Centor Star or Dual is turned on, its maximum capacity information and calibration data are collected in the main memory and the instrument is automatically configured.



**SPIP sensors allow to complete your force and torque measuring instruments at a very reasonable price.**

**Here is an overview of the standard sensors offered by Andilog. For more detailed information, visit our website:**

Ref.	Capacity	Accuracy	Resolution	Height	Width	Length	Thread
	N / LBS	% FS	FS	MM / IN	MM / IN	MM / IN	
<b>SPIP S2</b>	10-1000 / 2-20	0,1	1/10,000	60 / 2.36	25.4 / 0.98	80 / 3.15	M8
<b>SPIP S9</b>	1-50000 / 200-10,000	0,1	1/10,000	62 x 87 x 100 / 2.44 x 3.42 x 3.93	24 x 31 x 36 / 0.94 x 1.22 x 1.42	50 x 57 x 69 / 1.97 x 2.24 x 2.72	M8, 12 or M24 x 2
Ref.	Capacity	Accuracy	Resolution	Height	Diameter	Thread	
<b>SPIP LLB 130</b>	20-200 / 5-50	0,5	1/10,000	3,30 / 0.13	9,53 / 0.35	/	
<b>SPIP U9C</b>	50-50000 / 100-10,000	0,5	1/10,000	44-84 / 1.73-3.30	26-46 / 1.02-1.81	M5 / M10 / M16	
Ref.	Capacity	Accuracy	Resolution	Length	Diameter	Square/ Chuck	
	NM / LB.IN	% FS	FS	MM / IN	MM / IN	Opening in MM / IN	
<b>SPIP TH</b>	0,3-12 / 2.5-100	0,5	1/10,000	88 / 3.46	44 / 1.73	1,5-10 / 0.04-0.39	
<b>SPIP TW</b>	15-150 / 150-1500	0,5	1/10,000	340 - 493 / 13.39-19.40	/	Male 3/8 or 1/2	
<b>SPIP DT</b>	6-150 / 50-1500	0,5	1/10,000	75 x 28 x 52 / 2.95 x 1.10 x 2.04 or 75 x 38 x 58 / 2.95	/	1/4 or 3/8 or 1/2	



Display with external load cell

# New! WLC - Bluetooth Wireless sensor

## High accuracy measurement without cables

### Bluetooth sensor

The WLC sensors are the first wireless sensors in the Andilog range. They allow measurements to be performed without being disturbed by a wire or being connected to a display. Equipped with Bluetooth technology, these sensors are compatible with Windows computers or Andilog Centor Touch displays.

The WLC sensor is the first industrial wireless sensor designed for high accuracy measurements with a high acquisition frequency. **Integrating the latest measurement technologies, it now outperforms wired solutions in terms of accuracy.**

### Compatibility and Usage

WLC sensors are compatible with :

- **Displays, force gauges and torque gauges from the Centor Touch range.** Using a Bluetooth adapter designed by Andilog, Centor Touch instruments are able to read our wireless sensors. If you already have one of our instruments, it can be updated to have this function. You have all the functions of our displays but with external wireless sensors.
- **Computers equipped with Caligraph software.** Indeed the WLC TH sensors can be connected directly to a computer equipped with Bluetooth, the data display is then done directly in our Caligraph software without going through a display.



### Example of the WLC TH



- Clockwise and counterclockwise measurement up to 12Nm
- Accuracy of 0.25% of full scale
- Acquisition speed at 1,000Hz
- Autonomy: minimum 10 hours of measurement
- Range: minimum 10 meters in open field
- Charging time: 3 hours
- Mechanical protection of the sensor up to 150% of its capacity

### Easy connection

The connection between the Bluetooth module and the WLC sensor is very simple, just follow the following steps:

1. Switch on the sensor by pressing the sensor button. The blue LED lights up and remains steady.
2. Connect the Bluetooth module to the side of the Centor Touch
3. Switch on the Centor Touch
4. Centor Touch initializes the Bluetooth module
5. Choose your sensor from the list or press " scan " for a first connection
6. Connection with the sensor, the LED starts flashing
7. The sensor is connected and the measurements are displayed on the Centor Touche WLC TH



# Data acquisition

## Caligraph - Real time computer measurements



The Centor Start Touch can be connected to a computer with an USB cable. Together with the data acquisition and analysis software Caligraph, you can follow the evolution of the torque or force curves in real time, save your data, calculate automatically your results and edit test reports.

The measurement starts with a simple click and you monitor live and with a sampling rate of 5,000 Hz the force or torque measurements. Additionally, Caligraph offers predefined calculations such as the peak torque, the average between two values and enable to detect breaks.

Caligraph includes a report editor to simply and clearly present you curves and results in Microsoft Word or PDF files. You can also export your measurements or curves to Microsoft Excel for further analysis or the integration in other informatic systems or software.

## Datastick II - The portable data saving solution for your tests



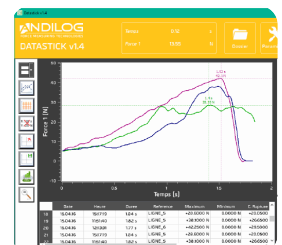
Thanks to the new Datastick II you can now count on a real portable solution to save easily all of your tests.

The software Datastick II and its USB stick help you save automatically or on demand the results (calculations, statistics) and the curves of your tests on an USB stick of your choice. The included software enables you to visualize the curves and measurement data on your computer and benefits from the performance of Caligraph.

The software Datastick II and its USB stick help you save automatically or on demand the results (calculations, statistics) and the curves of your tests on an USB stick of your choice.

The included software allow you to visualize the curves and measurement data on your computer and benefit from the performance of Caligraph. You can import the data saved, compare the curves and tests results and finalize your measurements with the editing of PDF or Word reports. Datastick II is user friendly and plugged in the connector of the housing thanks to its adapter and the setting takes place through the interface of the Centor.

**It is a complete solution for tests in the field and it is adapted to the demanding needs for better result traceability. You can also export the points of the curves in Excel.**



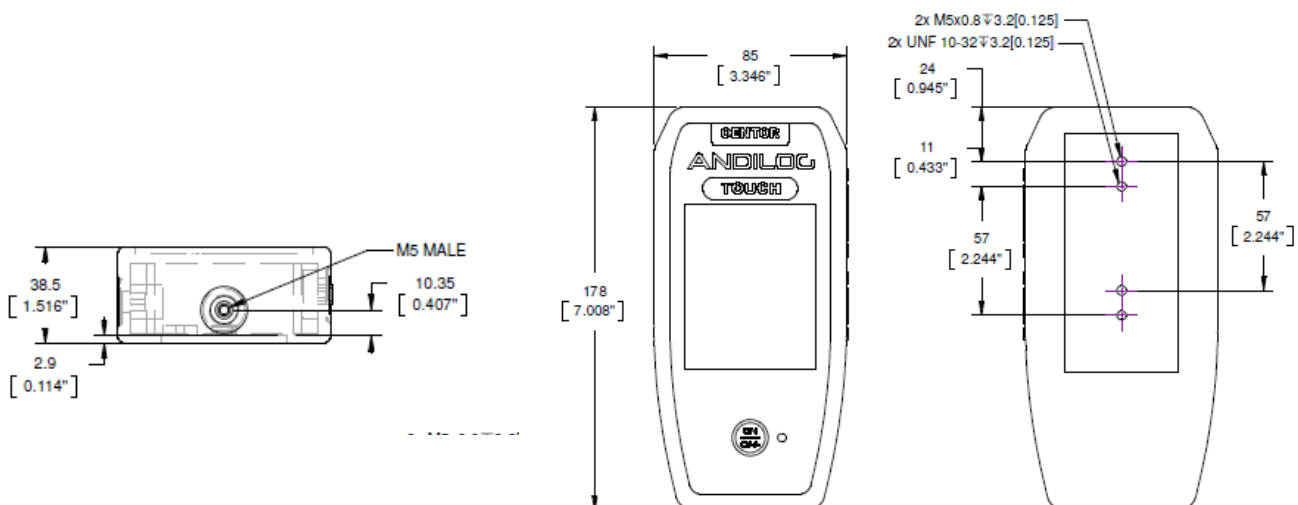
# Technical specifications

## Centor Star Touch specifications

<b>Overload protection</b>	150% FS
<b>Available units</b>	N, Lb, Kg, g, Oz, Nm, mNm, lbin, lbft, inoz
<b>Bargraph</b>	√
<b>Autonomy</b>	8 hours
<b>Memory</b>	2,000 results
<b>Sampling rate</b>	5 000 Hz internal 1 000 Hz SPIP 500 Hz WLC
<b>Computer connection</b>	USB, RS232
<b>USB transfer rate</b>	1,000 Hz
<b>RS232 transfer rate</b>	100 Hz

<b>Traction/compression measurement</b>	√
<b>Peak measurement</b>	√
<b>Calculations</b>	Peak, Average, Break
<b>Auto-off</b>	Adjustable duration
<b>Programmable thresholds</b>	√
<b>Reversible display</b>	90° and 180°
<b>Configurable display</b>	Up to 3 lines
<b>Carrying case</b>	√
<b>Digital outputs 5V</b>	6
<b>Digital inputs 5V</b>	3
<b>Supply voltage</b>	110 / 220 V
<b>Datastick (USB Stick)</b>	Option

## Dimensions



### System delivered with

- Centor Star Touch display with internal / wired / SPIP / Bluetooth sensor
- Delivered in its carrying case
- A hook, a rod, a compression plate (for the Centor Star Touch internal sensor)
- 110V / 220V power charger
- Certificate of calibration attached to COFRAC / NIST
- Optional: USB to PC cable, Datastick, Caligraph software

## Centor Star Touch

Force gauge, torque gauge and digital display



ISO 9001:2015 Certified

#### HEADQUARTERS

ANDILOG  
BP6200 I  
I 3845 VITROLLES CEDEX  
info@andilog.com  
www.andilog.com  
Tél : +33 442 348 340

#### USA

ANDILOG / COM-TEN  
6405 49th St North  
Pinellas Park, FL, 33781  
sales@com-ten.com  
www.andilog.com  
Tél : +1 72705201200